

Climbing Higher, Climbing Safer

www.nova-tec.com.au

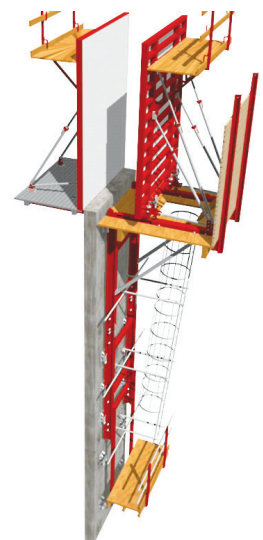
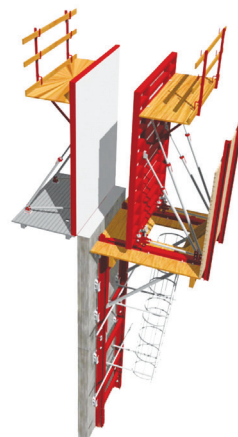
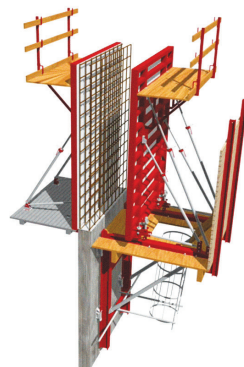


Novatec's Guided Climbing System, MGC, comprises vertical formwork and safety platforms as a single unit. These units are integrated with climbing rails. They remain securely and safely fixed to the building structure at all times with climbing shoes. These shoes are fixed to the structure with cast-in concrete anchors.

The MGC system is designed to meet the highest standards in efficiency and safety for high-rise construction.

Benefits and features include:

- Proven and cost-effective technology for buildings enabling core shafts and shear walls to be poured ahead of floor slabs
- A modular system for climbing, enabling screen adaption with the simplest possible design and logistics
- Choice of formwork system with simple adaptation
- Sliding carriages enable roll back of formwork for easy cleaning and the placement of reinforcement
- System is anchored to the building throughout the climbing process reducing the impact of wind velocities
- The working platforms are easily attachable to the climbing rails at any point
- Free positioning of guide rails up to a maximum width of 4500mm
- Optional trailing platforms complete with integrated ladders and safety cages
- Assembly is done at ground level requiring an initial wall height of only 3250mm
- Simple and fast climbing process - improves safety and reduces crane time.



NOVATEC - CLIMBING TO GREATER HEIGHTS