

Safety Screens - Superior Protection

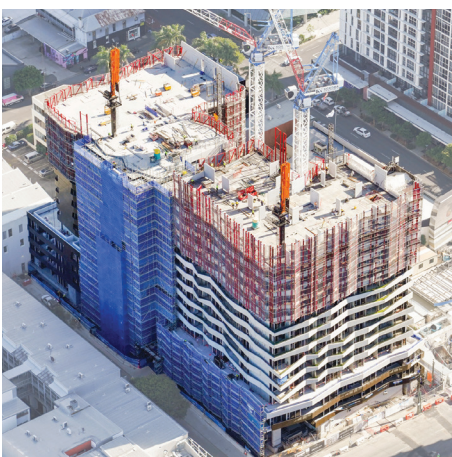
www.nova-tec.com.au


Climbing by Hydraulic Lift, Winch or Crane

GT150 provides all-round worker safety during the forming of suspended floor slabs and subsequent works in high-rise construction. The screens are guided by a simple needle system and vertically lifted from one level to the next by hydraulic rams, winching system or by crane. Screens can be provided with or without working platforms and stair access. Novatec custom design every GT150 system to suit your project, ensuring the highest safety whilst working on the live construction floors.

Fast assembly, setup and function

The GT150 system is transported pre-assembled ready to install or can be fully assembled on site. The screens are attached to the building by their guiding profiles and remain captive during the entire building and climbing phases. The initial setup can be installed with or without needles. Depending on floor heights, the screens can be climbed to the new level prior to concrete placement on the live construction floor.



Description	Size (mm)	Floor Coverage*
Standard Screens	15,000	4-5
Platform Screens	15,000	4-5
Stair Screens	15,000	4-5
Screen & Stair Extensions	various	5+

*Dependant on finished floor levels.

System benefits include:

- Hydraulic, electric or crane lifting option, depending on site and building requirements
- Enables faster construction program cycles due to the high number of floors covered
- Cantilever screen up to 9 meters from the highest fixing point or restraint
- Engineered and designed to withstand cyclonic weather conditions
- Safer working conditions - mesh panel enclosure
- Working platforms can be added at any height enabling access for post tensioning, painting and glazing
- Stair access (including stretcher stair) as required
- Bespoke screen needle hurdles accommodate fixing points above pre-installed balustrades
- Adaptable to various building layouts
- Compliant with Australian safety standards.